

HEMP ESSENTIAL OIL „SAINT OIL”

Research report - analysis of the composition and content of the ethereal hemp oil by gas chromatography GC-MS

The results of the GC-MS analysis

No.	RT [min]	Component name	303/18	comments
			Norm. [%]	
1.	5,63	1R- α -Pinene	13,78	-
2.	6,76	L- β -Pinene	5,48	-
3.	7,06	β -Pinene	23,13	-
4.	7,64	3-Karene	1,08	-
5.	8,09	o-Cymene	1,07	-
6.	8,23	D-Limonene	1,54	-
7.	8,27	β -Felandrene	0,81	-
8.	8,74	β -Ocymene	5,37	-
9.	9,92	Terpinolene	12,40	-
10.	12,17	p-Cymen-8-ol	0,93	-
11.	17,83	cariofilene	12,99	-
12.	18,18	α -Bergamotene	1,85	-
13.	18,71	(E)- β -Famesene	0,69	-
14.	18,84	Humulene	4,08	-
15.	19,83	β -Selinene	0,87	-
16.	21,44	Selino-3,7(11)-dien	0,49	-
17.	22,69	cariophilene oxide	3,66	-
18.	28,77	Geranyllinalool	1,08	-
19.	31,36	canabidiol	0,002	-
20.	31,80	tetrahydrocannabinol	< LOD	-
		residue	8,70	-
		sum	100,00	-

RT – retention time

Norm. [%] – normalized to a 100% share of the analytical signal area of a given component with respect to the sum of the areals of all analytical signals

Comments:

- The names of chemical compounds given in Table 1 were proposed on the basis of a comparison of spectra obtained with the MS spectral library.
- The percentages given in table 1 are not equal to the percentage concentration, therefore they should be treated as approximate values.

Attachments:

- chromatogram
- graph



Print Date: 06 Jul 2018 14:02:32

Chromatogram Plot

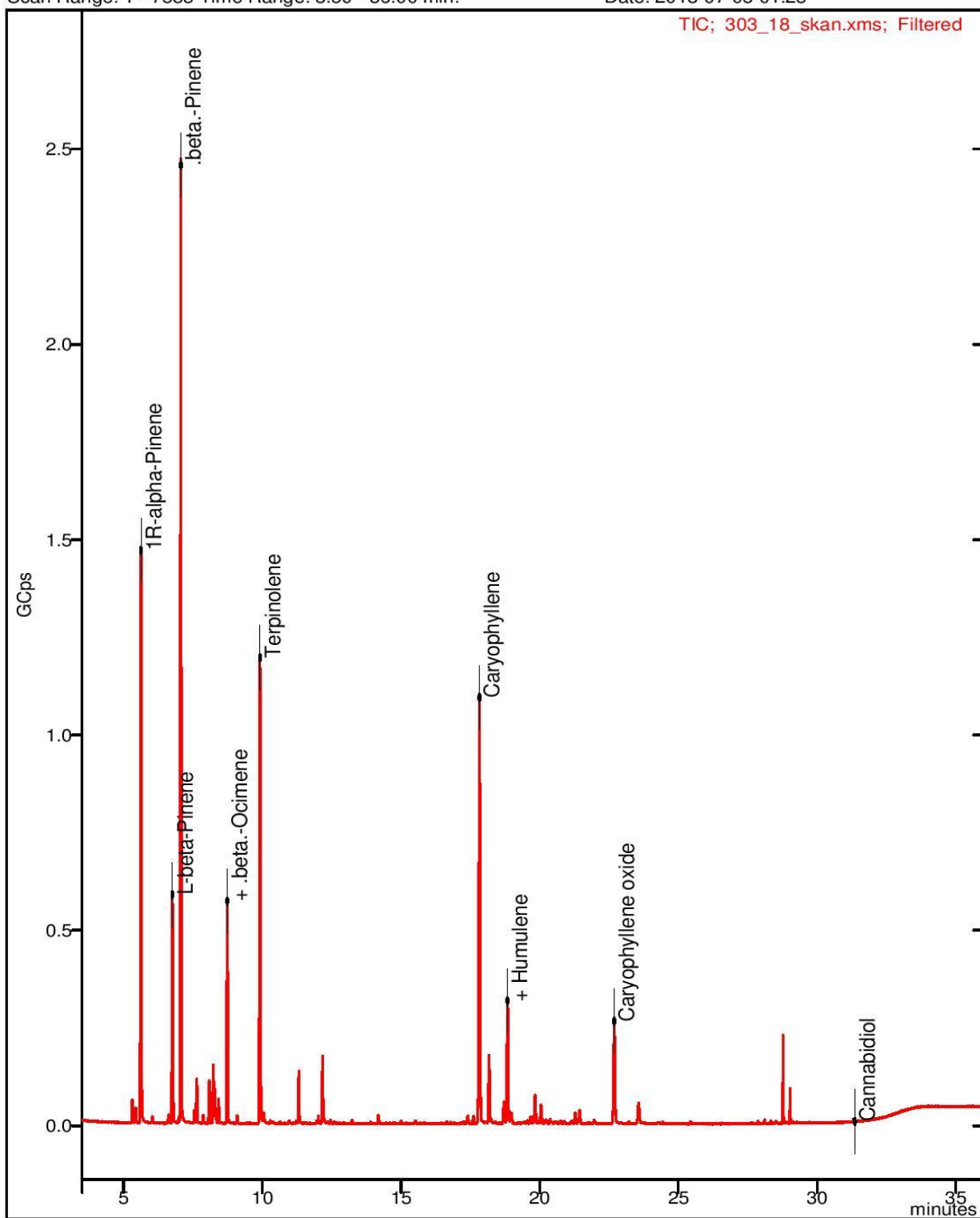
File: c:\brukerws\data\2018_07_04\303_18_skan.xml

Sample: 303_18_skan

Scan Range: 1 - 7583 Time Range: 3.50 - 36.00 min.

Operator: PB

Date: 2018-07-05 01:25



Hemp essential oil terpen content "SAINT OIL"

